

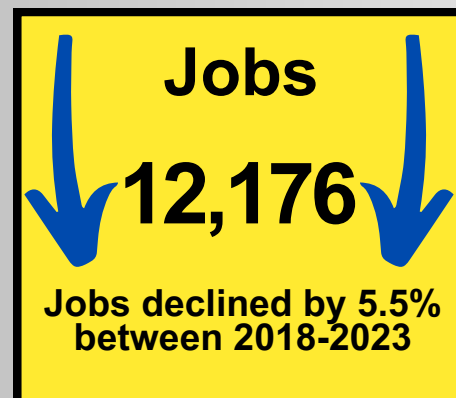
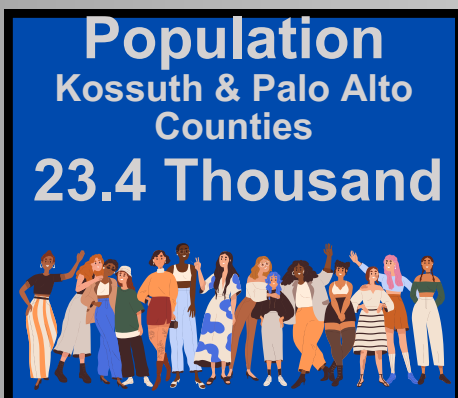


Kossuth / Palo Alto County Economic Development Corporation

# Economic Impact

## 2024 Snapshot

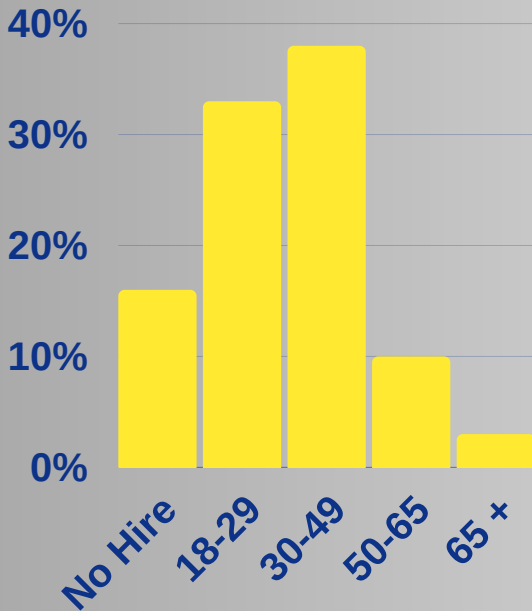
The Kossuth/Palo Alto County Economic Development Corporation supports the growth of existing business and industry, along with the creation of new business. This report provides an overview of both Kossuth and Palo Alto Counties' current economic development climate for businesses, education, healthcare, agriculture, and renewable fuels.



# BUSINESS BACKGROUND

## *in Kossuth and Palo Alto Counties*

### Age Groups Hired in the Past Year



**31**

percent of businesses are in retail, trade, or service industries

**33**

businesses plan to expand in the next five years

**74**

percent of businesses own or lease sufficient property

**79**

companies anticipate new products or services in the next two years

Source: K/PACEDC FY 2023-24 Business Survey

# Iowa Lakes Community College

## Quick Facts

**\$719,458 in scholarships were awarded in 2023-2024**

**Aviation & Airport Management - Ranked Top Community College Aviation Program in the United States!**

**Powersports & Power Equipment Technology - Ranked #2 in the nation for motorcycle mechanics schools & the only program in Iowa!**

**72% of Iowa Lakes graduates stay in the area and support the economy**

**Kossuth & Palo Alto County Payroll:**  
**\$5,155,500.52**

**48% of Iowa Lakes students graduate debt-free**

**179 of Iowa Lakes employees are from Kossuth or Palo Alto County!**

**Cosmetology - Full Service Salon on Campus!**

## Top Graduating Programs in 2024 by Degrees Earned



**AAIAS Degree**



**Nursing**



**Welding**



**Electrical Technology**



**Veterinary Technician**

Source: Iowa Lakes Community College FY 2024

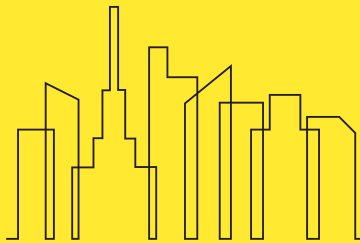
## Revolving Loan Funds

**22** Kossuth County RLF  
Businesses Funded

770,400 Dollars Invested

**15** Palo Alto County RLF  
Businesses Funded

582,000 Dollars Invested



**46** New Sales Tax  
Permits Issued

## Educational Attainment



**93.05%**

High School graduates  
or higher

Sources: K/PACEDC Revolving Loan, IA Dept of Revenue; Emsi Q2 2024

# HOSPITAL IMPACTS ON LOCAL ECONOMY

## KOSSUTH COUNTY HOSPITALS CREATE...



Emergency Room Visits: 4,632  
Total Outpatient Visits: 124,512  
Community Health Visits: 8,084  
Volunteers: 53  
Total Admissions: 1,525  
Births: 134  
Surgeries: 1,073  
Clinic Visits: 39,191

### 254 TOTAL JOBS



- In Kossuth County 3.8% of all jobs come from hospitals

### \$18,156,497 TOTAL WAGES

- In Kossuth County 5.6% of all wages come from hospitals

### \$39,121,973 TOTAL EXPENSES



- 4.0% of Kossuth County gross domestic product

## PALO ALTO COUNTY HOSPITALS CREATE...



An Affiliate of **MERCYONE**.

Emergency Room Visits: 3,091  
Total Outpatient Visits: 21,639  
Community Health Visits: 4,902  
Volunteers: 52  
Total Admissions: 481  
Births: 73  
Surgeries: 733  
Clinic Visits: 25,153

### 348 TOTAL JOBS



- In Palo Alto County 9.4% of all jobs come from hospitals

### \$15,508,232 TOTAL WAGES

- In Palo Alto County 9.7% of all wages come from hospitals

### \$30,327,619 TOTAL EXPENSES



- 5.3% of Palo Alto County gross domestic product

Sources: Iowa Hospital Association January 2024 Data; Kossuth Regional Health Center; Palo Alto County Health Systems

## Benefits to Palo Alto County

The average customer at the Emmetsburg casino spends  
**\$101.09** on the gambling floor.

6% of gaming revenues are received through the Palo Alto County Gaming Development Corporation and distributed to local governments, schools, and area non-profit organizations totaling more than  
**\$29.5 million** over the past 17 years.

*These grants provide improvements throughout the county and surrounding areas including: new equipment/building for hospitals, fire departments, law enforcement, schools, cities, area organizations and the development of recreational trails.*

Sources: Wild Rose Casino; Iowa Racing and Gaming Commission



**Employees:** 120 Full Time, 40 Part Time

**Adjusted Gross Revenue:** \$32,279,000

**Admissions:** 26,610 Customers/month

# Crops & Agriculture

## in Kossuth and Palo Alto Counties

### Kossuth County

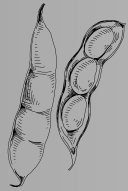


**Total Farmland:** 584,543 acres  
**Average Farm Size:** 441 acres  
**Number of Farms:** 1347  
**Farmland Value:** \$13,562/acre

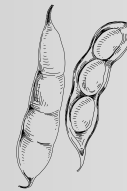
### Palo Alto County



**Total Farmland:** 360,741 acres  
**Average Farm Size:** 428 acres  
**Number of Farms:** 842  
**Farmland Value:** 13,448/acre



**Harvested Acres:** 230,500 acres  
**Yield per Acre:** 56.2  
**Bushels Produced:** 12,949,000  
**Soybeans State Rank:** 1



**Harvested Acres:** 123,700 acres  
**Yield per Acre:** 59.2  
**Bushels Produced:** 7,323,000  
**Soybeans State Rank:** 23



Corn

**Harvested Acres:** 289,00  
**Yield per Acre:** 197.6  
**Bushels Produced:** 57,104,000  
**State Rank:** 1



Corn

**Harvested Acres:** 157,900 acres  
**Yield per Acre:** 211.7  
**Bushels Produced:** 33,427,000  
**State Rank:** 21

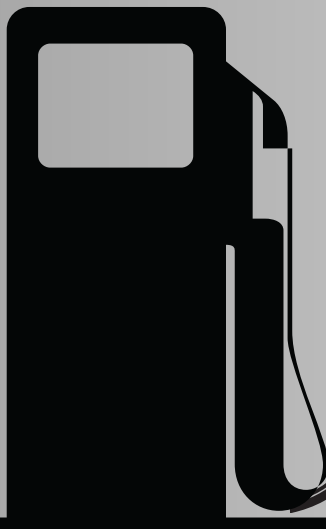
**2022 Stats**

**2023 Stats**

Sources: USDA; National Agricultural Statistics Service; U.S. Department of Agriculture, Iowa State University Extension and Outreach

# Renewable Fuels

## in Kossuth and Palo Alto Counties



**62M**

**Estimated Bushels**  
of corn processed annually

**1.4M**

**Tax Dollars**  
Returned to the area annually

**180**

**Estimated direct jobs**

**176M**

**Estimated Gallons**  
of ethanol produced annually

**67M**

**Estimated Gallons**  
Soy Biodiesel Annual Capacity



**E15** is approved by the EPA for use in all light duty vehicles built since 2001. This accounts for about **96%** of today's automotive fleet

Source: Kossuth and Palo Alto County Treasurers Office, Emsi Q2 2023; Ethanol RFA 2023

**KOSSUTH / PALO ALTO COUNTY ECONOMIC DEVELOPMENT CORPORATION**

106 S. Dodge St., Suite 210 | Algona, IA 50511 | PH 515-295-7979

kcedc@kossuthia.com | www.kpacedc.com